

# PARAGON KILN MODELS

## A-66B, A-66, AA-6B and AA-6

### WIRING DIAGRAMS AND PARTS IDENTIFICATIONS

**WHEN ORDERING PARTS,  
ALWAYS SPECIFY  
MODEL NUMBER,  
REFERENCE NUMBER,  
PART NUMBER,  
AND DESCRIPTION**

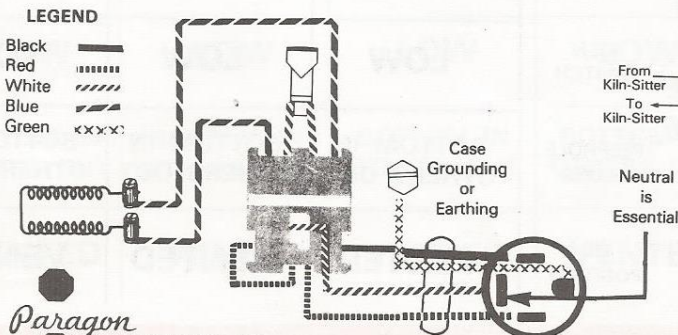
For prices of parts, see your current  
Paragon Kiln Catalog Price List.  
All prices are F.O.B. factory, Dallas County, Texas  
and are subject to change without notice.

The models available for the CSA label  
have the kiln wiring terminated in a  
special box on the kiln for stationary installation.

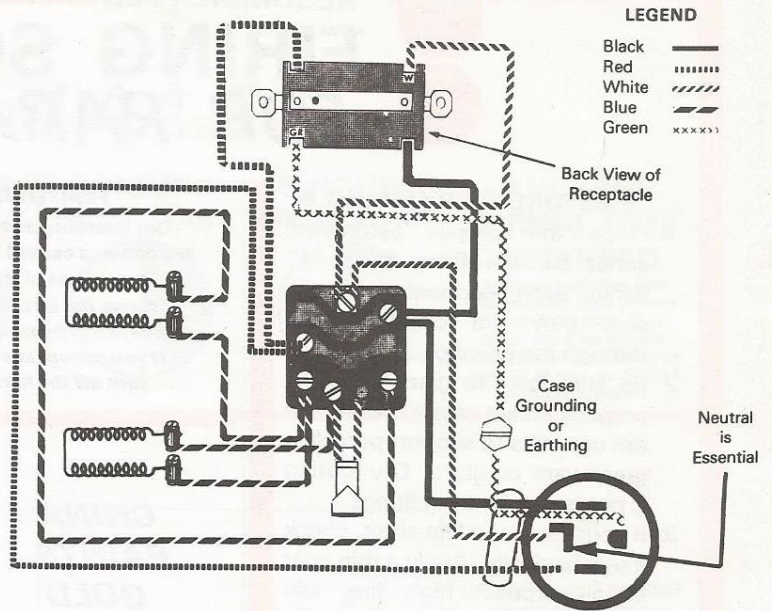
**MERCHANDISE TO BE SHIPPED TO ONE ADDRESS  
ON ONE ORDER MUST TOTAL \$5.00 BEFORE  
THE POSTAGE AND HANDLING CHARGES ARE ADDED.**

The letter "B" following the Model Number  
means the kiln has a stainless steel jacket.

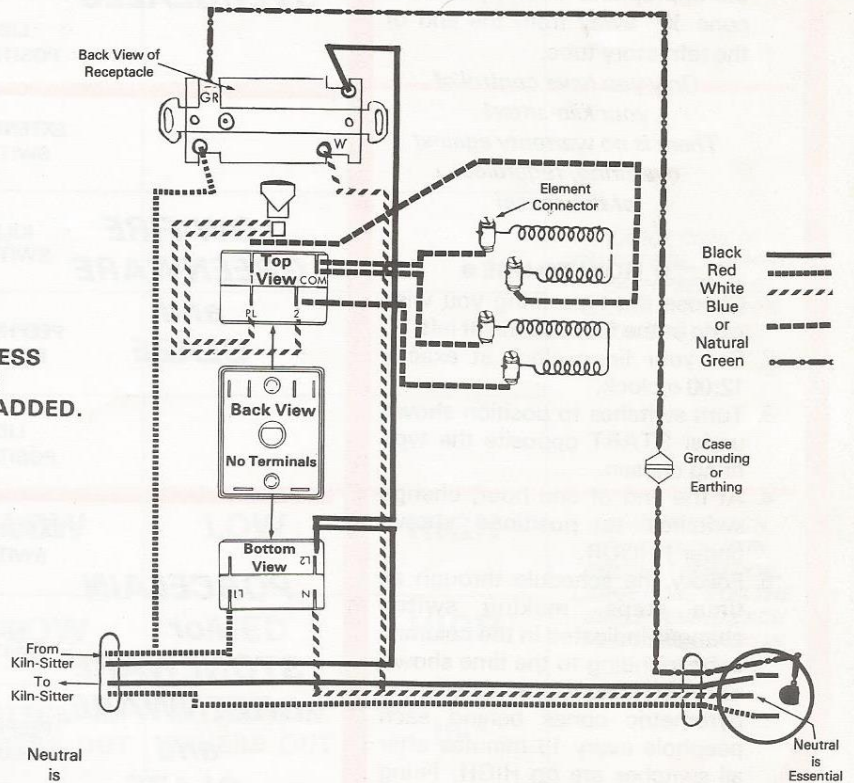
#### Extension Collars AA-6B and AA-6



#### MODELS A-66B and A-66 (4-way Rotary Switch With Screw-on Terminals)



#### MODELS A-66B and A-66 (4-way Rotary Switch With Push-on Terminals)



**Paragon**  
INDUSTRIES, INC.  
BOX 10133  
DALLAS, TEXAS 75207



RECOMMENDED

# FIRING SCHEDULE POSTER FOR PARAGON KILN MODELS

● **BEFORE EVERY FIRING** ●

1. Place the proper pyrometric cones for the firing 3" to 4" behind each peephole, and make sure they are clearly visible through the peepholes.
2. Be sure low-fire glazed ware is properly stilted or dry-footed. Do not use stilts to support porcelain greenware or glaze. Dry-footing is necessary for both firings.
3. If your kiln has a kiln-sitter, check it mechanically. Apply a thin coat of all-purpose, high fire, kiln wash to the upper edges of the cone supports and the lower side of the actuating rod. Then place the appropriate small pyrometric cone ¼" away from the end of the refractory tube.

*Only you have control of your kiln-sitter!*

*There is no warranty against overfiring, regardless of the cause!*

● **HOW TO USE** ●

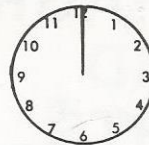
1. Choose the type firing you wish to do in the first column at left.
2. Set your firing clock at exactly 12:00 o'clock.
3. Turn switches to position shown under START opposite the type firing chosen.
4. At the end of one hour, change switches to positions shown under 1 HOUR.
5. Follow the schedule through all time steps, making switch changes indicated in the columns corresponding to the time shown on your firing clock. Check the pyrometric cones behind each peephole every 15 minutes after all switches are on HIGH. Firing times are not affected any measurable amount by altitude (the number of feet above or below sea level) of kiln's location. But firing time can be doubled or cut in half by voltage variation at all altitudes.

**WARNING**

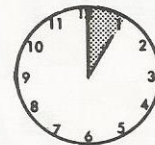
**Our warranty does not cover any damage caused by overfiring, regardless of the cause.**

**Never fire by time alone... always use pyrometric cones! If you cannot see the cones, turn off the kiln at once!**

**START**



**1 HOUR FROM START**



**1½ HOURS FROM START**



*DO NOT*

		START	1 HOUR FROM START	1½ HOURS FROM START
<b>CHINA PAINTS, GOLD and OTHER OVERGLAZES</b>	EXTENSION SWITCH	LOW	LOW	LOW
	KILN SWITCH	LOW	LOW	MED
	PEEPHOLE PLUGS	BOTTOM IN OTHERS OUT	BOTTOM IN OTHERS OUT	BOTTOM IN OTHERS OUT
	LID POSITION	VENTED	VENTED	VENTED
<b>LOW-FIRE GREENWARE and GLAZE</b>	EXTENSION SWITCH	LOW	LOW	LOW
	KILN SWITCH	LOW	MED	MED
	PEEPHOLE PLUGS	BOTTOM IN OTHERS OUT	BOTTOM IN OTHERS OUT	BOTTOM IN OTHERS OUT
	LID POSITION	VENTED	VENTED	VENTED
<b>PORCELAIN or STONWARE GREENWARE and GLAZE</b>	EXTENSION SWITCH	LOW	LOW	LOW
	KILN SWITCH	LOW	LOW	LOW
	PEEPHOLE PLUGS	BOTTOM IN OTHERS OUT	BOTTOM IN OTHERS OUT	BOTTOM IN OTHERS OUT
	LID POSITION	VENTED	VENTED	VENTED

\* Do not close lid until all odor of china paint oils or burning lace has gone. Leave

# A-66B, A-66, AA-6B and AA-6

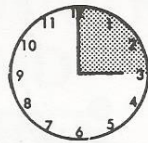
2 HOURS  
FROM START



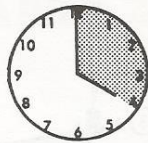
2½ HOURS  
FROM START



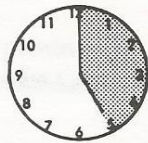
3 HOURS  
FROM START



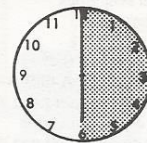
4 HOURS  
FROM START



5 HOURS  
FROM START



6 HOURS  
FROM START



OPEN KILN LID FOR 8 HOURS AFTER FIRING HAS BEEN COMPLETED.

## AVERAGE FIRING TIME REQUIRED

*Voltage variation can cause firing time to vary from ½ to more than twice the time shown. Max. temp. may lower to cone 04 or approx. 2000° F. with blank collar*

LOW	HIGH				
MED	HIGH				
BOTTOM IN OTHERS OUT	IN*				
VENTED	CLOSED*				
LOW	HIGH				
HIGH	HIGH				
IN*	IN				
CLOSED*	CLOSED				
LOW	LOW	LOW	LOW	LOW	HIGH
LOW	LOW	LOW	LOW	MED	HIGH
BOTTOM IN OTHERS OUT	BOTTOM IN OTHERS OUT	BOTTOM IN OTHERS OUT	BOTTOM IN OTHERS OUT	BOTTOM IN OTHERS OUT	IN*
VENTED	VENTED	VENTED	VENTED	CLOSED*	CLOSED

LARGE CONE 019 ON THE SHELF BEHIND EACH PEEPHOLE BENDS IN 2¾ TO 3¼ HOURS AVERAGE

LARGE CONE 05 ON THE SHELF BEHIND EACH PEEPHOLE BENDS IN 3¾ TO 4¼ HOURS AVERAGE

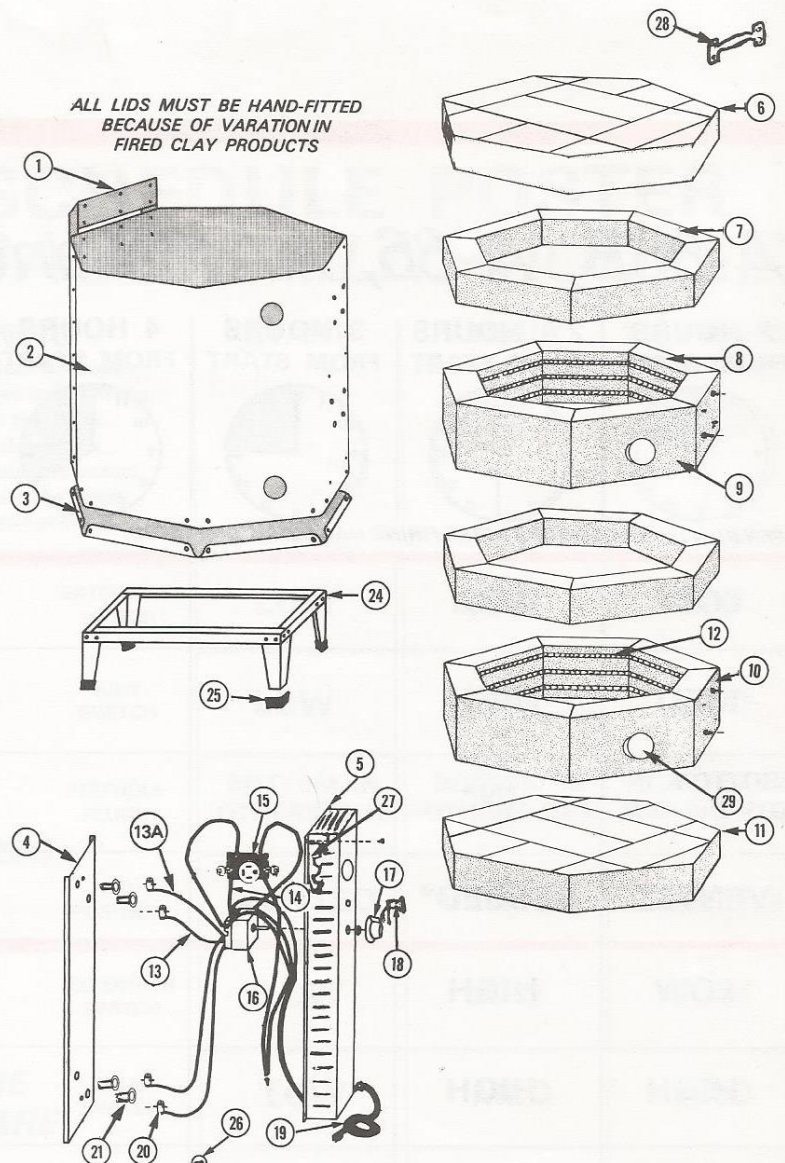
LEAVING SWITCH, PLUG AND LID IN PRESENT POSITION, LARGE CONE 5 ON THE SHELF BEHIND EACH PEEPHOLE BENDS IN 7½ TO 8 HOURS AVERAGE

**Paragon**  
INDUSTRIES, INC.  
BOX 10133  
DALLAS, TX 75207

peephole plugs out until no vapor can be detected by holding a hand mirror in front of the top peephole.

## PARAGON KILN MODELS A-66B and A-66

REF. NO.	PART NO.	DESCRIPTION
1.	Specify Model	METAL JACKET PARTS
2.	Specify Model	Hinge, complete, gray or brown
3.	Specify Model	Form-Fitted Jacket, stainless or brown
4.	Specify Model	Full-Formed Steel Base
5.	Specify Model	Heat Shield
6.	BR-11-66	INSULATING FIREBRICK
7.	BR-6-66	Brick Lid with Band, stainless or brown, (less hardware)
8.	BR-2-66	2" Plain Wall Brick
9.	BR-4-66	4" Straight Grooved Wall Brick
10.	BR-3-66	4" Peephole Wall Brick
11.	BR-10-66	4" Terminal Wall Brick
		Brick Bottom, only
12.	EL-A-66	ELECTRICAL PARTS
13.	WR-2 or WR-4	Heating Element for A-66B, A-66, A-66S, B-66S, A-66S-B
13A.	WR-14	#14 Switch-to-Element Lead Wires, screw-on eyelet both ends
14.	WR-12 or WR-13	#14 Switch-to-Element Lead Wires, push-on terminal one end
15.	RC-1	#14 Double Switch-to-Element Lead Wires, push-on terminal one end
16.	SW-2 or SW-4	Receptacle-to-Switch Connecting Wires, screw-on eyelet both ends
17.	KN-1 or KN-3	Receptacle-to-Switch Connecting Wires, push-on terminal one end
18.	MS-7	Receptacle, 4-wire, 20 amp., 125/250v. for kiln's switch box
19.	CR-10	Switch, 20 amp. TAAO 4-way Rotary for screw-on eyelets
20.	MS-6	Switch, 26 amp. A-21 4-way Rotary for push-on terminals
21.	MS-1	Knob for 4-way Rotary Switch TAAO or TAAO, black center
22.	HW-1	Knob for 4-way Rotary Switch A-21, silver center
23.	MS-7	Pilot Light with Lead Wires, complete
24.	CR-10	10-4, 30 amp., 240 v., 7 ft. cord, with 4-prong plug
25.	MS-6	Element Connectors
26.	MS-1	Porcelain Insulators (1 1/8" long)
27.	HW-1	OTHER REPLACEMENT PARTS
28.	HW-6	Lock-In Support, for large A-series (7 and 8 sides)
29.	HW-8	Hand Lifts for A-series
30.	ST-2	Kiln Stand
31.	ST-1	Plastic Feet, only
32.	HW-8	#8 Plated Metal Screws
33.	HW-7	Fall Away, Prop-R-Vent Kit
34.	HW-4	Lid Handle, for small A-series, (8-sided or less)
35.	PL-2	Peephole Plug, Cone Shaped for A-series



## PARAGON KILN MODELS AA-6B and AA-6

1.	Specify Model	Hinge, lower half, gray or brown
2.	Specify Model	Form-Fitted Jacket, stainless or brown
3.	BR-2-66	4" Straight Grooved Wall Brick
4.	BR-8-AA6	2" Straight Grooved Wall Brick
5.	EL-A-AA6	Heating Element for AA-6B, AA-6
6.	BR-7-AA6	2" Terminal Wall Brick
7.	BR-3-AA6	4" Terminal Wall Brick
8.	BR-4-66	4" Peephole Wall Brick
9.	PL-2	Peephole Plug, Cone Shaped for A-series
10.	Specify Model	Heat Shield
11.	MS-1	Porcelain Insulators (1 1/8" long)
12.	MS-6	Element Connectors
13.	WR-2	#14 Switch-to-Element Lead Wires, screw-on eyelet both ends
14.	WR-6	Switch-to-Switch Connecting Wires, screw-on eyelet both ends
15.	SW-3	Switch, 20 amp. 3-way Rotary
16.	Specify Model	Ventilated Switch Box, metal only gray or brown
17.	KN-2 or KN-5	Knob for 3-way Rotary Switch, black center
18.	MS-7	Knob for 3-way Rotary Switch, silver center
19.	CR-7	Pilot Light with Lead Wires, complete 14-4, 240v., 3 ft. cord, with 4-prong plug for extension collar
20.	HW-8	#8 Plated Metal Screws

